

## BUILD-TO-SUIT OPPORTUNITY UP TO ±160,000 SF

±11.09 Acres  
PAD Zoned Land



### Property Highlights:

- ±11.09 Acres
- Parcel: 500-01-008F
- Zoning: PAD
- Dimensions: ±376' x ±1261.86'; (slightly irregular)
- ±1261.86 feet of frontage on Interstate 10
- Flood Zone: Zone X, Flood insurance not required

Exclusively offered by:

**Paul E. Boyle**  
Executive Vice President  
602.224.4414  
pboyle@brephoenix.com

**Gary Anderson**  
Senior Vice President  
602.224.4439  
ganderson@brephoenix.com

**Justin LeMaster**  
Senior Associate  
602.224.4477  
jlemaster@brephoenix.com

**Rick Danis**  
Executive Vice President  
602.224.4405  
rdanis@brephoenix.com

2375 E. Camelback Rd, Suite 300  
Phoenix, Arizona 85016  
ph: 602.954.9000  
fx: 602.468.8588

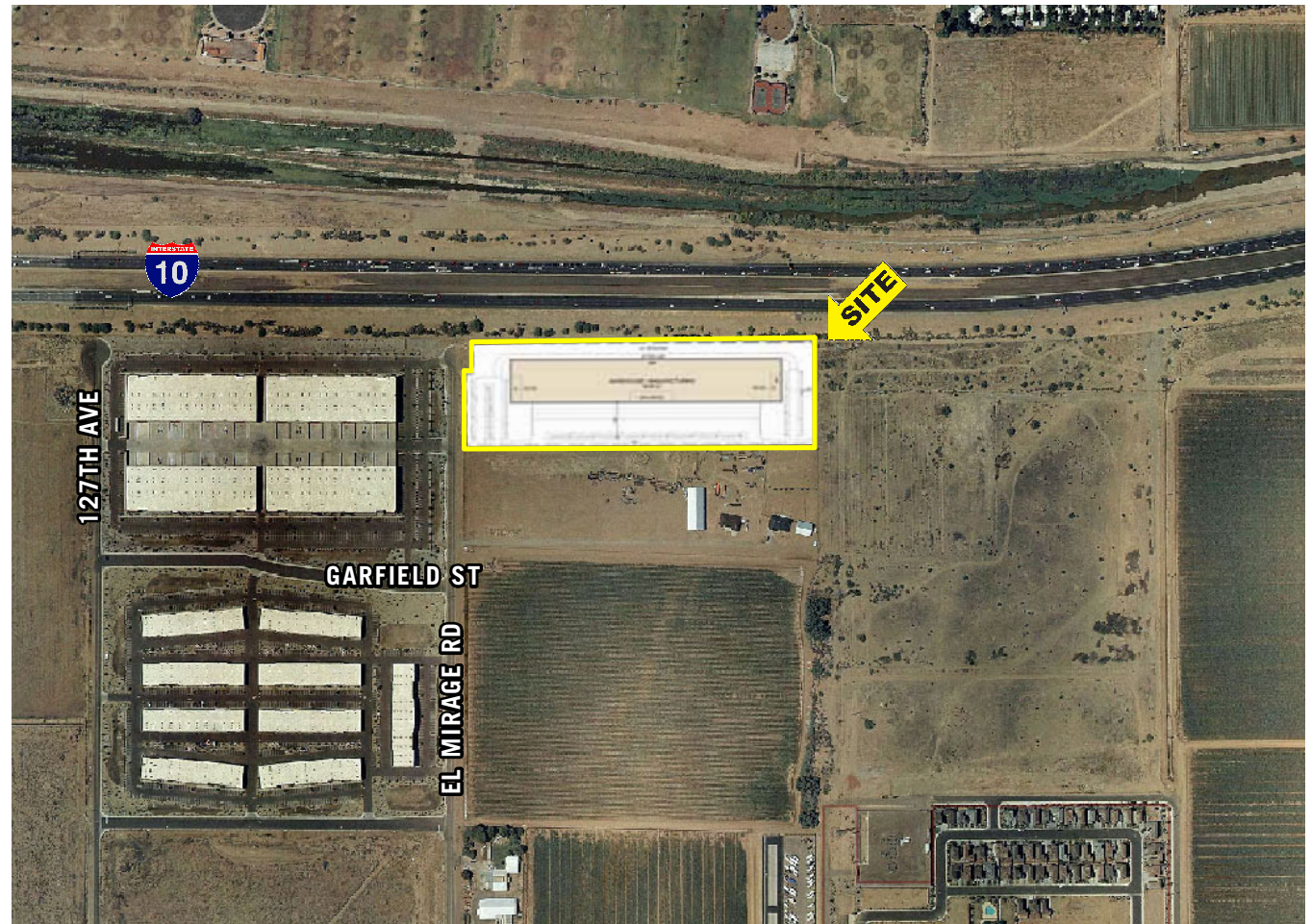
[www.brephoenix.com](http://www.brephoenix.com)

# El Mirage & Interstate 10

Avondale, Arizona

## Property Highlights:

- Parcel Number: 500-01-008F
- Build-to-Suit Opportunity up to ±160,000 SF
- Electric: Salt River Project
- Water: City of Avondale; 12" line in El Mirage Road
- Sewer: City of Avondale; 12" line in Van Buren Street
- Excellent exposure on Interstate 10
- Great employment facility site
- Adjacent to ±600,000 square foot business park development



For more information, please contact:

**Paul E. Boyle**

Executive Vice President  
602.224.4414  
pboyle@brephoenix.com

**Gary Anderson**

Senior Vice President  
602.224.4439  
ganderson@brephoenix.com

**Justin LeMaster**

Senior Associate  
602.224.4477  
jlemaster@brephoenix.com

**Rick Danis**

Executive Vice President  
602.224.4405  
rdanis@brephoenix.com

2375 E. Camelback Rd, Suite 300  
Phoenix, Arizona 85016

ph: 602.954.9000  
fx: 602.468.8588

[www.brephoenix.com](http://www.brephoenix.com)

**Cassidy  
Turley** BRE  
Commercial